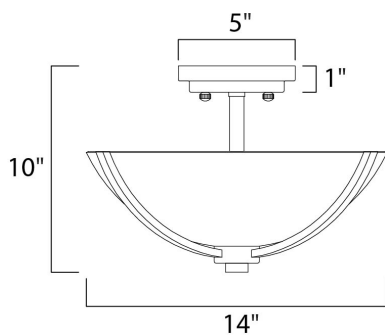




PRODUCT DESCRIPTION

Intersecting arms finished in your choice of Satin Nickel or Oil Rubbed Bronze support tall, cylindrical Satin White glass shades for a spectacular and transitional look.





MEASUREMENTS

DIMENSION : 14" L x 14" W x 10" H
HANGING WEIGHT : 3.63 lb

LAMPING

INPUT VOLTAGE : 120V
BULB : 3 x 60W Incandescent E26 Medium , 180W Total
BULB INCLUDED : (Not Included)
DIMMABLE : Yes

FINISHES OPTION

 Oil Rubbed Bronze
 Satin Nickel

GLASS

Satin White SW

MATERIAL

Steel, Glass

RATINGS

cETLus
Dry Location



ADDITIONAL

OPERATING TEMPERATURE:
-20°C (-4°F), 40°C (104°F)

Always consult a qualified electrician before installing any lighting product.



WESTERN DISTRIBUTION CENTER (HEADQUARTER)
253 NORTH VINELAND AVE | CITY OF INDUSTRY, CA 91746

EASTERN DISTRIBUTION CENTER
4200 SHIRLEY DR. | ATLANTA, GA 30336

P. 626.956.4200 | F. 626.956.4225 | maximlighting.com