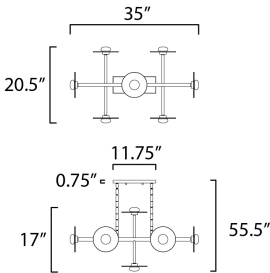




**PRODUCT DESCRIPTION**

Simplistic frames of Black terminate at machined fittings that support round Frost glass discs with a clear reveal on the outside edge. Satin White glass diffusers conceal LED boards which provide ample light with excellent color rendition.



**MEASUREMENTS**

DIMENSION : 20.5" L x 35" W x 17.5" H x 21" Ext  
 MAX OAH : 55.75" OAH  
 CANOPY : 4.5" W x 1.5" H x 11.75" L  
 HANGING WEIGHT : 13.36 lb

**LAMPING**

INPUT VOLTAGE : 120V  
 LUMENS : 3,040 Rated (2,370 Del.)  
 BULB : 8 x 4W LED PCB Integrated , 32W Total  
 BULB INCLUDED : (Integrated)  
 DIMMABLE : Triac CL or ELV  
 CRI : 90 CRI  
 COLOR\_TEMP : 3000K

**FINISHES OPTION**

Black

**GLASS**

Frosted and Satin White FTSW

**MATERIAL**

Steel, Glass

**RATINGS**

cETLus  
 Dry Location



**ADDITIONAL**

ADJUSTABLE  
 SLOPE: 90  
 RATED LIFE 35000 Hours  
 OPERATING TEMPERATURE:  
 -20°C (-4°F), 40°C (104°F)

Always consult a qualified electrician before installing any lighting product.



**WESTERN DISTRIBUTION CENTER (HEADQUARTER)**  
 253 NORTH VINELAND AVE | CITY OF INDUSTRY, GA 91746  
**EASTERN DISTRIBUTION CENTER**  
 4200 SHIRLEY DR. | ATLANTA, GA 30336  
 P. 626.956.4200 | F. 626.956.4225 | maximlighting.com