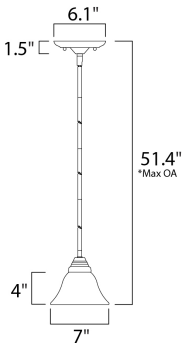




PRODUCT DESCRIPTION

The contemporary Basix EE collection features sweeping arms and clean lines. Basix EE is offered in choice of Ice glass with Satin Nickel finish or Wilshire glass with Oil Rubbed Bronze finish. Fixtures include energy efficient, long lasting and low maintenance compact fluorescent bulbs, with select fixtures being Energy Star certified.



*max overall height

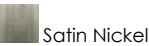
MEASUREMENTS

- DIMENSION : 7" W x 4" H
- MAX OAH : 51.4" OAH
- CANOPY : 6.1" W x 1.5" H x 6.1" L
- HANGING WEIGHT : 2.65 lb

LAMPING

- INPUT VOLTAGE : 120V
- LUMENS : 900 Rated
- BULB : 1 x 13W Fluorescent GU24 , 13W Total
- BULB INCLUDED : (Included)
- DIMMABLE : No
- CRI : 80+ CRI
- COLOR_TEMP : 2700K

FINISHES OPTION



GLASS

Ice IC

MATERIAL

Steel

RATINGS

Dry Location
CA Title 24



ADDITIONAL

INCANDESCENT WATTS: 82
RATED LIFE 10000 Hours
OPERATING TEMPERATURE:
-20°C (-4°F), 40°C (104°F)

Always consult a qualified electrician before installing any lighting product.



WESTERN DISTRIBUTION CENTER (HEADQUARTER)
253 NORTH VINELAND AVE | CITY OF INDUSTRY, CA 91746
EASTERN DISTRIBUTION CENTER
4200 SHIRLEY DR. | ATLANTA, GA 30336
P. 626.956.4200 | F. 626.956.4225 | maximlighting.com