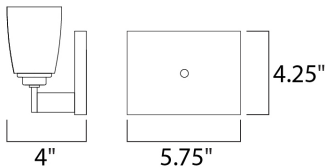
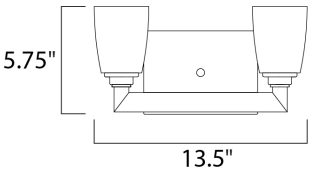




**PRODUCT DESCRIPTION**

Rectangular metal tubing mitered to a perfect angle lends a sharp, clean, contemporary look. Angle collection utilizes xenon lamps for ultimate light output while maintaining a petite scale and low profile. Angle is available in Satin Nickel finish with Satin White glass.



**MEASUREMENTS**

DIMENSION : 13.5" W x 5.75" H x 4" Ext  
 BACK PLATE : 4.25" W x 5.75" H  
 HANGING WEIGHT : 3.09 lb

**LAMPING**

INPUT VOLTAGE : 120V  
 LUMENS : 900 Rated  
 BULB : 2 x 40W Xenon G9 , 80W Total  
 BULB INCLUDED : (Included)  
 DIMMABLE : Yes  
 COLOR\_TEMP : 2900K

**FINISHES OPTION**



**GLASS**

Satin White SW

**MATERIAL**

Steel

**RATINGS**

Damp Location  
 ADA



**ADDITIONAL**

INSTALL UP/DOWN: Up  
 RATED LIFE 2000 Hours  
 OPERATING TEMPERATURE:  
 -20°C (-4°F), 40°C (104°F)

Always consult a qualified electrician before installing any lighting product.



**WESTERN DISTRIBUTION CENTER (HEADQUARTER)**  
 253 NORTH VINELAND AVE | CITY OF INDUSTRY, CA 91746  
**EASTERN DISTRIBUTION CENTER**  
 4200 SHIRLEY DR. | ATLANTA, GA 30336  
 P. 626.956.4200 | F. 626.956.4225 | maximlighting.com